



## HIGH PERFORMANCE WHEEL END COMPONENTS



*Upgrade* YOUR FLEET'S  
*performance* WITH DRP HUB BEARINGS & SPACERS.  
*Making your Fleet* ... MORE EFFICIENT ... MORE RELIABLE ... MORE PROFITABLE



DRP HIGH PERFORMANCE BEARINGS &  
SPACERS REDUCE FRICTION & LOWER  
OPERATING TEMPERATURES, SAVING  
YOU FUEL AND MAINTENANCE EXPENSE.





*Race Proven*

## **How DRP Can Help Maximize Your Trucks Performance:**

- **Reduce Bearing Drag Caused By Bearing Preload**

*Bearing Preload causes tremendous drag on your hubs, robbing your truck of horsepower and fuel economy.*

- **Reduce Tire Drag & Wear**

*Bearing End Play fixes the preload problems, but causes steering instability and tire scrub, increasing tire wear and drag. Our Patented, Adjustable Bearing Spacers allow you to set your hub bearings to the perfect balance of Zero Pre-Load and .001" End Play.*

- **Reduce Maintenance Costs Caused By Bearing Failure**

*Bearing Pre-Load and Excessive End Play causes bearing and seal failures. Our Patented, Adjustable Bearing Spacers and High Performance Bearing Kits run cooler and lessen maintenance.*

- **Deliver You Valuable Data**

*We don't assume or guess, we test and measure. Our expertise in building custom test equipment and data acquisition can deliver you the data needed to make better decisions.*

- **Save You Money with Rebuilt Hubs vs. Replacement**

*Many of the "pre-set" hub options available require complete replacement of the hub assembly. DRP Patented Adjustable Bearing Spacers and Set-Up Tools allow you to rebuild hubs to a higher tolerance than they were new! Save money and increase performance.*



Contact Us:  
888-399-6074  
[support@drpperformance.com](mailto:support@drpperformance.com)

# TECHNOLOGY TO ENHANCE YOUR FLEET

**888-399-6074**  
**DRPPERFORMANCE.COM**

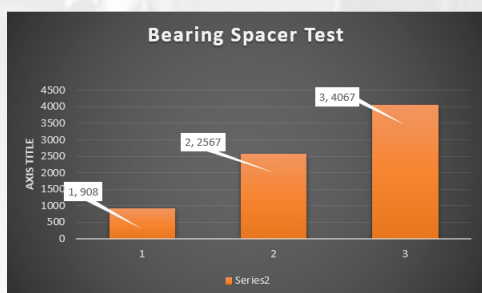
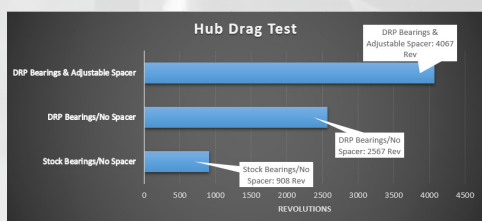
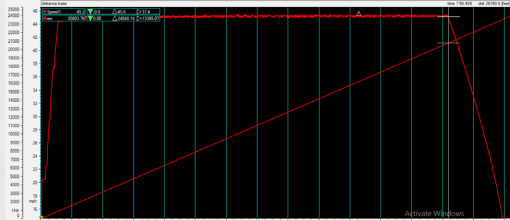
## Data Driven!

*We invest tremendous time and resources to test components in a laboratory setting, simulating real world conditions as much as possible.*

*Controlled environment testing allows direct monitoring and measurement of individual components, eliminating variables.*

*While lab testing is great for precise measurements, real world testing is important to validate the data. We utilize our advanced data acquisition systems to record hub temps, hub rpm & even hub play while on the road!*

*We are experts in building test equipment for advanced vehicle analysis. We're now applying that expertise to the trucking industry!*



***Passionate About Quality.***  
***Dedicated to Service.***







*Race Proven*

## **Patented Adjustable Bearing Spacers**

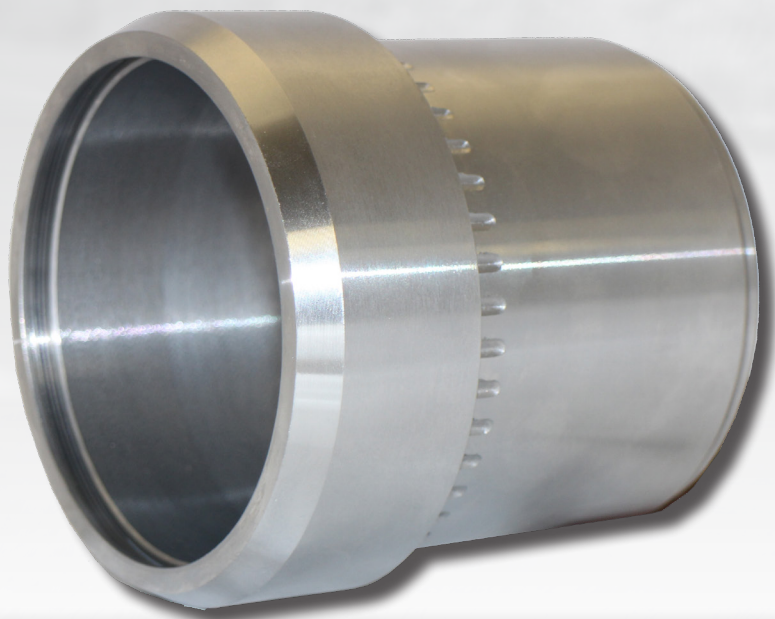
*Adjustable bearing spacer technology has been tested and proven in markets from heavy hauling and earth moving in Australia to NASCAR® here in the USA for over 15 years.*

*Developed by Spacertech in Australia and Covered by US Patent No. 6,312,162, adjustable bearing spacers are simple and effective ways to turn any hub assembly into an efficient, high performance unit!*

*Available for almost any application:*

- Heavy Duty Steer, Drive and Trailer Axles
- Utility & Boat Trailers • Camping & Car Trailers
- RV's & Busses • Automotive • Motorsports

- Precisely Sets Bearing End Play
- Eliminates Bearing Spin
- Up to 4X Bearing Life
- Lower Bearing Temps
- Lowers Maintenance
- Lower Hub Drag
- Heavy Duty Billet Steel Design
- Precision Machined
- Reusable



Contact Us:  
888-399-6074  
[support@drppperformance.com](mailto:support@drppperformance.com)



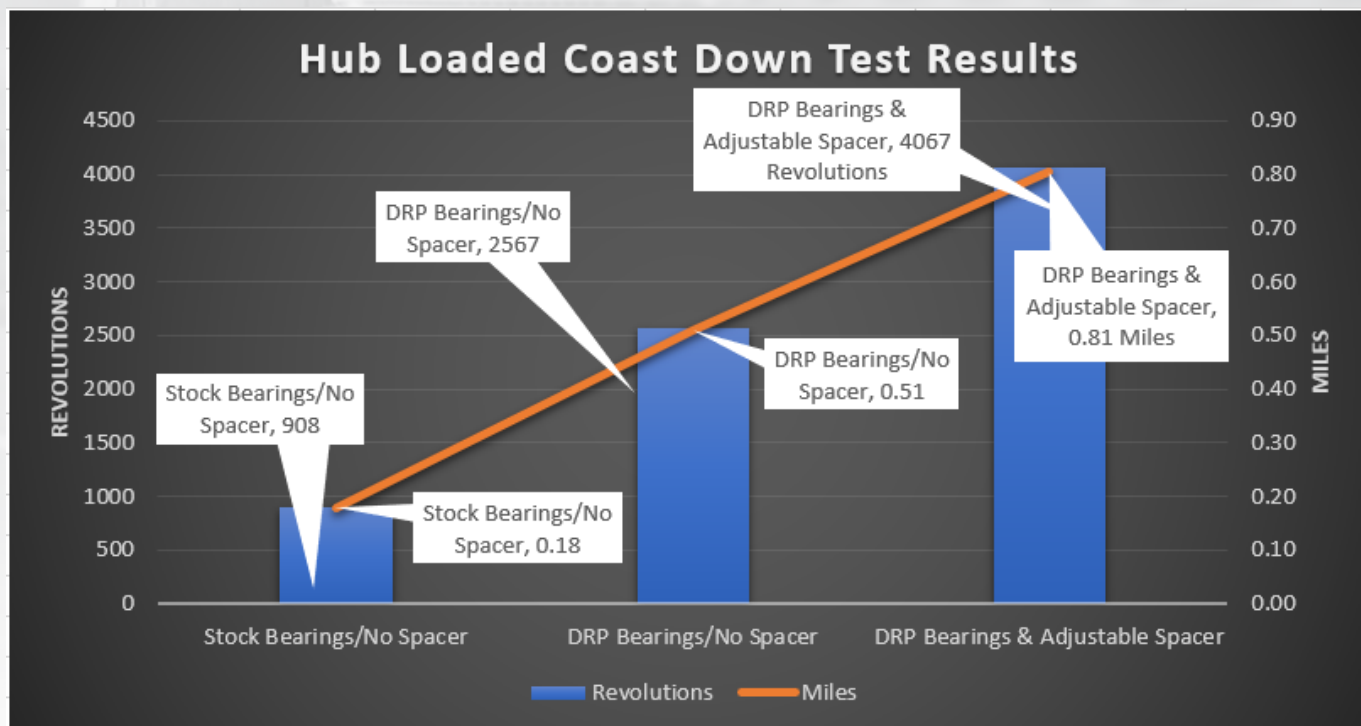
# TECHNOLOGY TO ENHANCE YOUR FLEET

**888-399-6074**  
**DRPPERFORMANCE.COM**

*Wheel hubs, bearings and races all have manufacturing tolerances, forcing solid spacers to leave a wide tolerance for hub end play.*

*.002" of Additional Hub End Play = Over 1/16" Additional Toe Out Per Tire or 1/8"+ Additional Toe Out Per Axle, On Every Axle!*

*.001" of Additional Hub Pre-Load = 300%+ Additional Bearing Drag vs. .001" End Play!*



***Passionate About Quality.  
Dedicated to Service.***





*Race Proven*

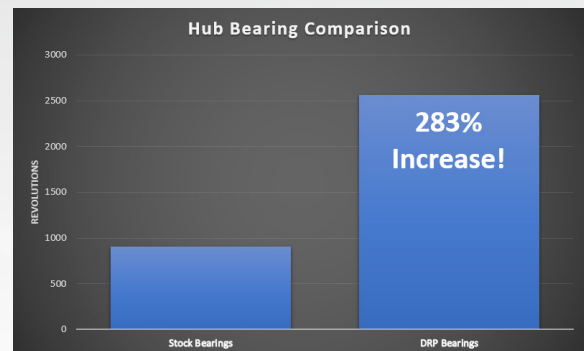
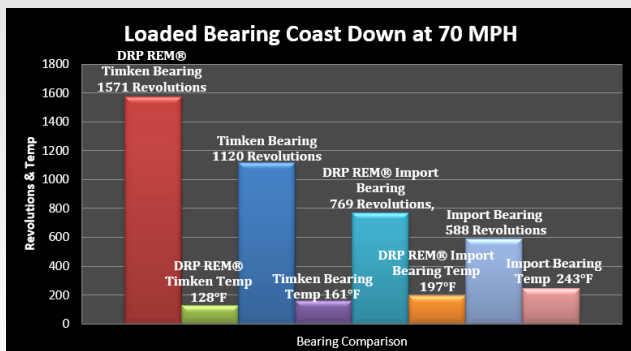
## High Performance Bearing Sets



*Developed originally for the racing market, our Super Finishing process improves the surface finish of any bearing, smoothing out the jagged peaks left from the bearing manufacturing process, while imbedding a isotropic pattern in the surface to hold lubricant.*

*This process has been proven to lower bearing operating temperatures by over 100 degrees! Friction & Drag are lowered and bearing life is increased.*

*We can process almost any tapered roller bearing and offer bearing sets from stock.*



Contact Us:  
888-399-6074  
[support@drppperformance.com](mailto:support@drppperformance.com)



# TECHNOLOGY TO ENHANCE YOUR FLEET

**888-399-6074**  
**DRPPERFORMANCE.COM**

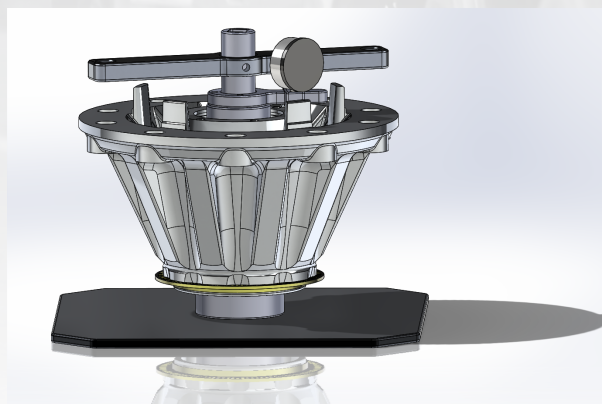
## Castle Concept Nut System

*The Castle Concept Nut System is a wide hardened chromoly steel nut which incorporates a unique, patented locking system, allowing the installer to generate enough pressure to obtain the 600ft/lbs needed to seat all the components together without fear of the axle nut socket slipping.*



## Hub Set-Up Tools

*We build tool sets for steer, drive and trailer hubs to precisely set bearing end play.*



*Our Hub Set-Up Tools and adjustable bearing spacers allow you to take any hub and build a High Performance, Low Drag Hub assembly quickly and accurately.*

*No Assumptions. No Guesswork.*

***Passionate About Quality.***  
***Dedicated to Service.***







***Performance Products***



**TOLL-FREE 1-888-399-6074**

**DRPPERFORMANCE.COM**

**WORLD LEADERS IN LOW DRAG HUB COMPONENTS**

*"...let us run with endurance the race that is set before us..." Hebrews 12:1*